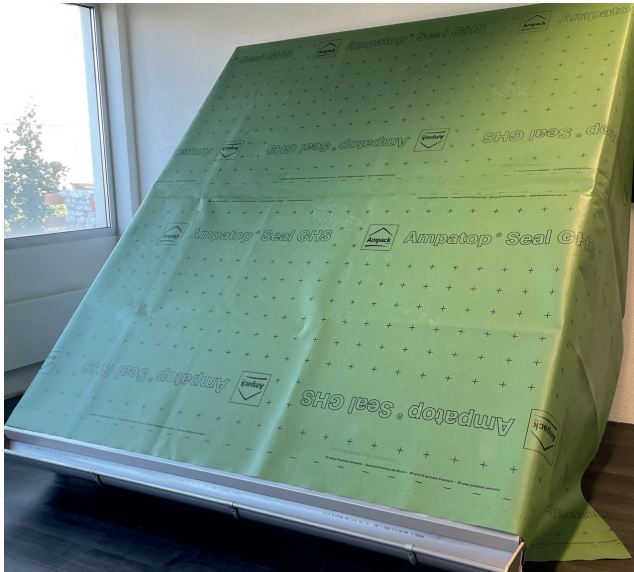


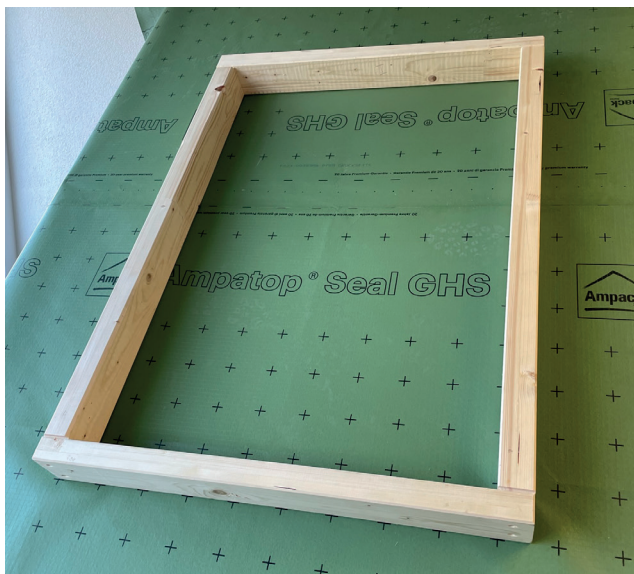
Integration of VELUX roof window MK06 with original VELUX ODL in Megasol MATCH Slate with mounting subframe and subroof from Ampack







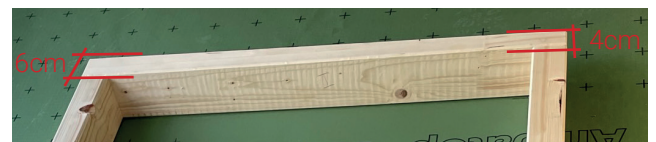
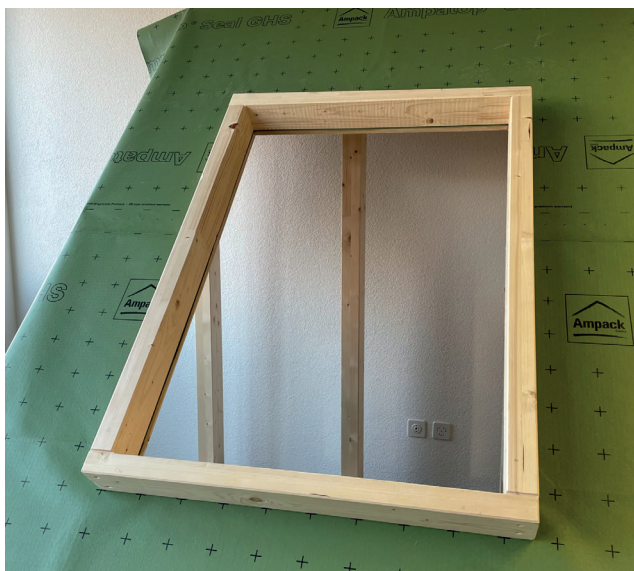
Apply the under-roof membrane over the entire surface (recommended under-roof membrane from Ampack: Ampatop® Seal GHS, approved for 6 months free weathering).



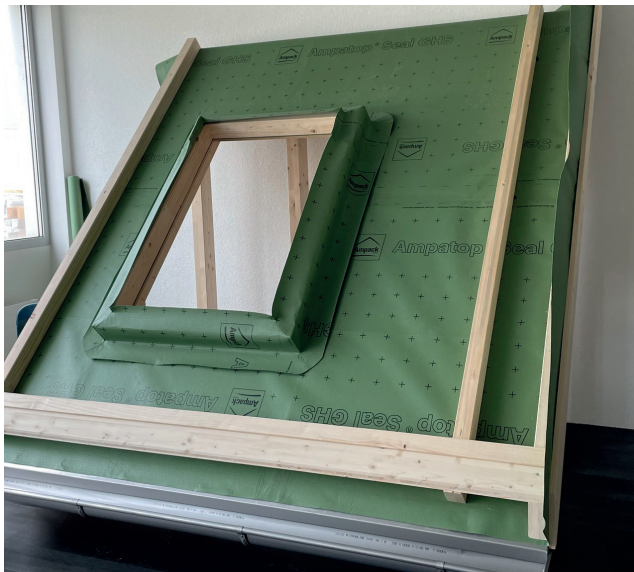
Place mounting frame. Arrangement based on technical drawings Megasol MATCH Slate. Align, angle and screw together the subframe.

### Notes on wooden subframe:

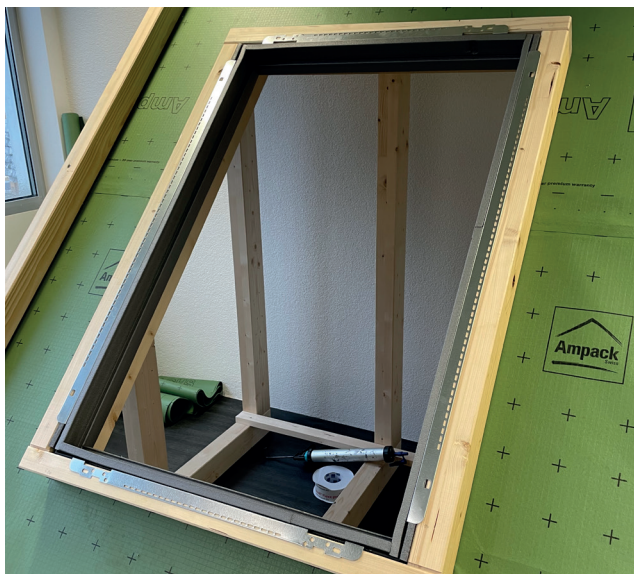
- Internal dimension horizontal: Window width + 60mm
- Internal dimension vertical: Window height + 50mm
- Height: Height of counterbattens + height of roof battens (e.g. 80mm + 30mm = 110mm)
- Make the subframe conical at the top, e.g. from 60mm to 40mm.
- Horizontal notch in all corners for mounting bracket



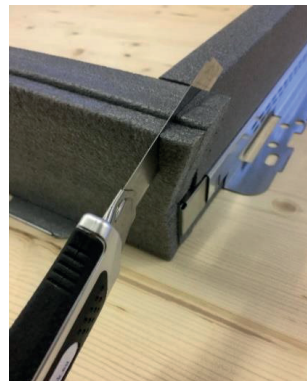
Cut open the skylight opening.



Check subframe alignment to the eaves.  
Divide and add counter battens.

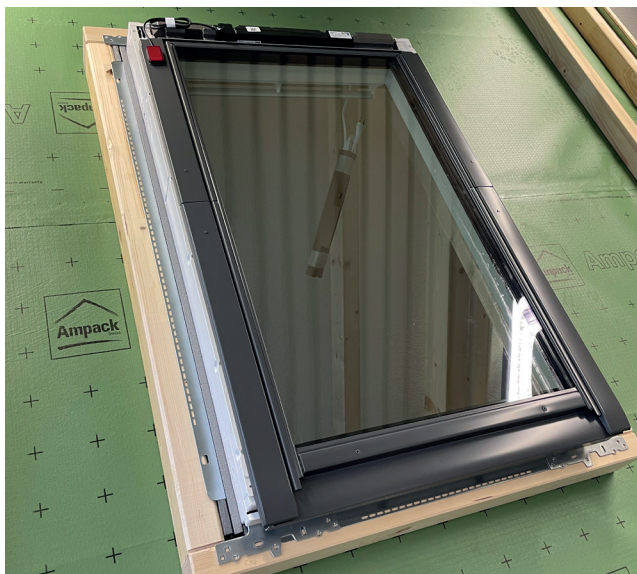


Assemble the BDX insulation frame and cut and position the tabs on all 4 sides at right angles.

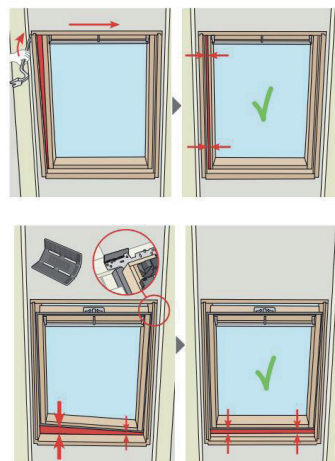


Attach the mounting bracket and place the skylight in the subframe.





Align the skylight in the "angle" and "winch" and screw into the subframe.

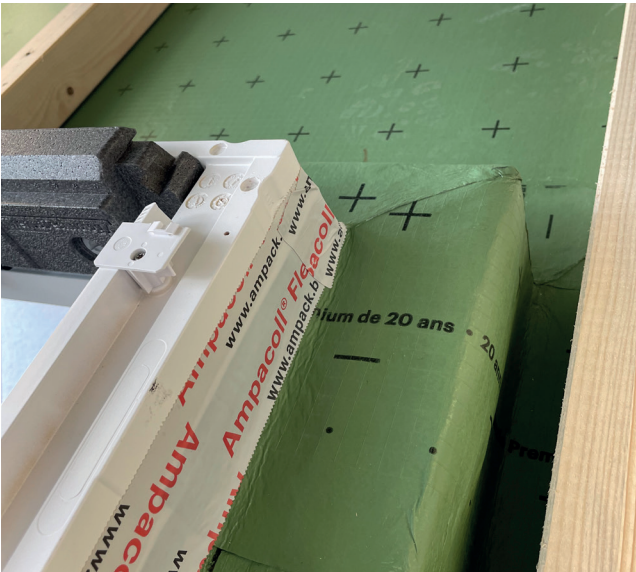


Alternatively, pull the under-roof membrane up the mounting frame conventionally according to the manufacturer's instructions.

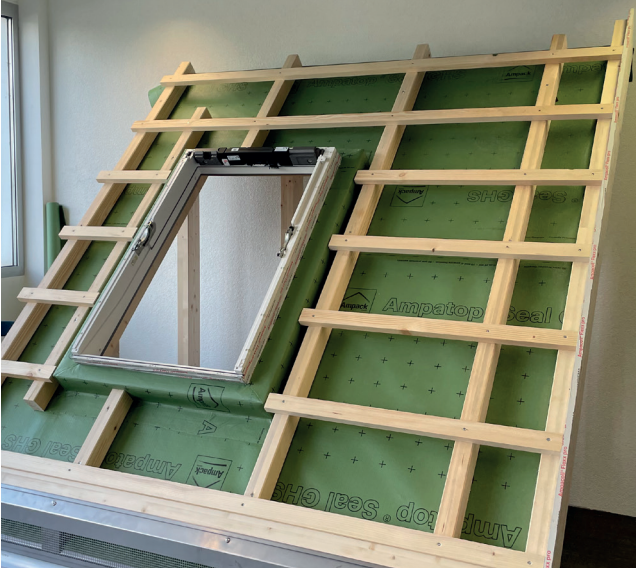


Weld the apron homogeneously over the entire surface.





Masking the sub-roof membrane on the skylight.



Apply nail sealing tape to the counter bracket (guidelines of the under-roof membrane manufacturer) and install according to the batten plan.



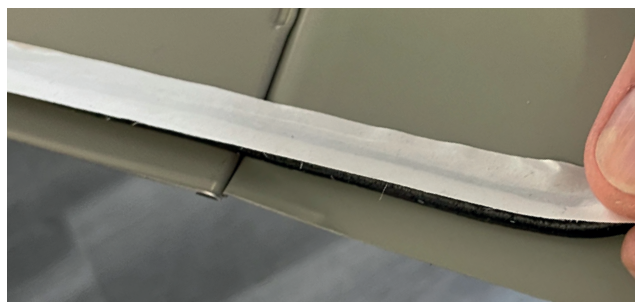
Attach Megasol MATCH Slate hooks according to planning information or individual arrangement.





Fitting the VELUX lower part of the flashing (type ODL) and attaching the Solbank plate PLUS (2a)

Apply a Butylkit strip (or similar) to the back of the ODL base to prevent contact between glass and metal



Install the side parts of the ODL flashing.



Fold down the tab.





Attach drains 2a and 3a to the flashing.

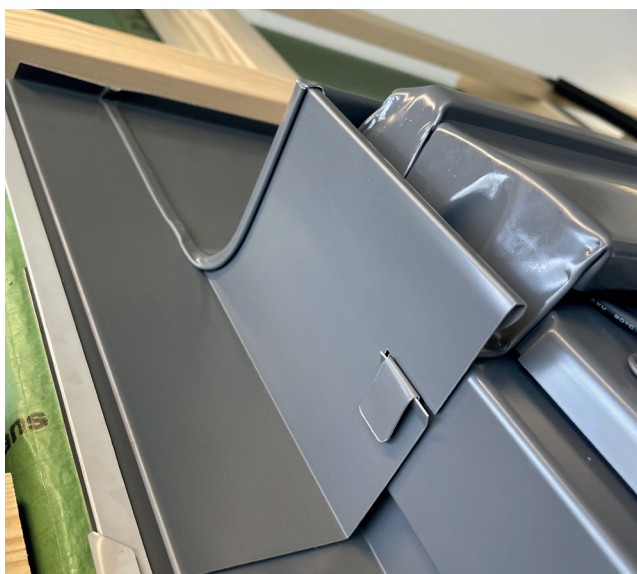


Mounting the awning box.



Slide the flashing head piece into the side rebate.

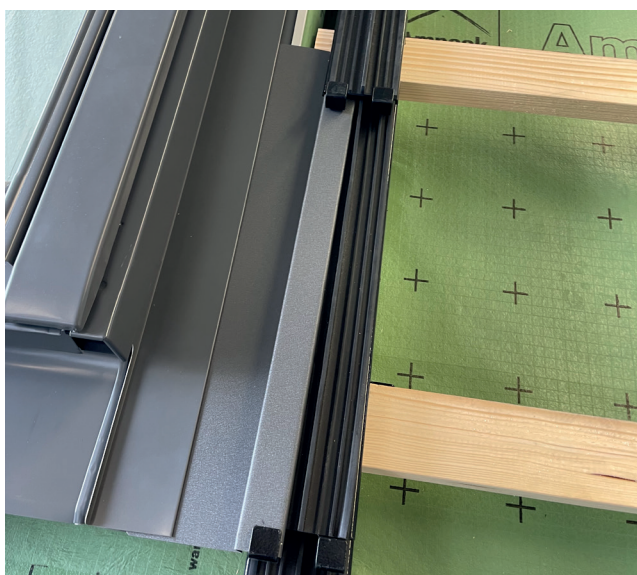




Fold down the frame cover plate tab.



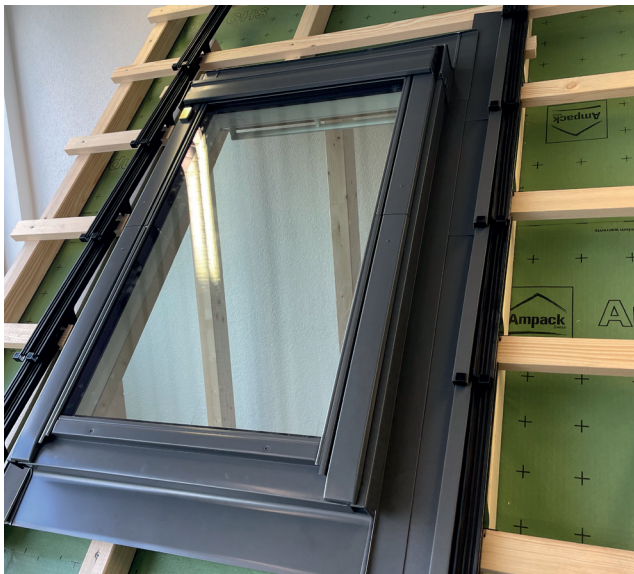
Fully assembled ODL flashing.



Attach the end plates provided by the customer, starting with "Transition plate bottom L & R for MK06-SK06-MK10-SK10". Drawings of the plates at the end of the document.







Add conically shaped side plates on the left and right ("Transition plate R for MK06-SK06-MK10-SK10" & "Transition plate L for MK06-SK06-MK10-SK10")



Fastening the inlet plate at the top with roofing screws ("Top transition plate for MK06-SK06-MK10-SK10")



Inserting the Megasol Slate modules. Installation sequence freely selectable.



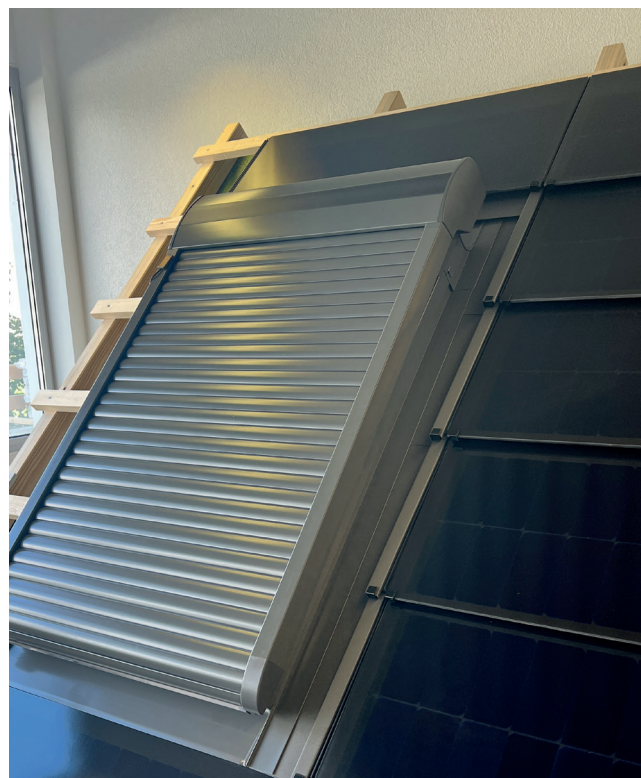
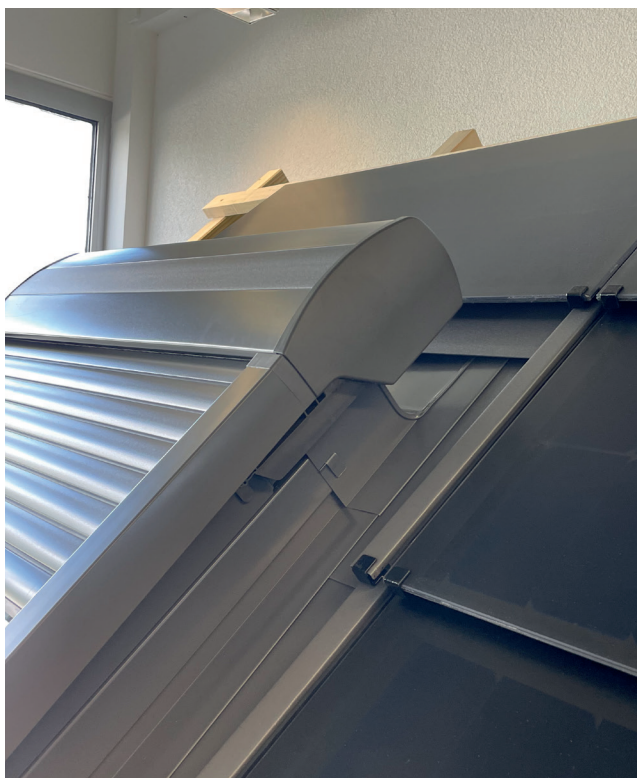
More pictures

| A4 |

| V23.10 |



Roof window size MK06 78x118cm with original VELUX ODL flashing, MATCH Slate modules Mxx-HC24 (totallyblack Crystal / Fjord look)

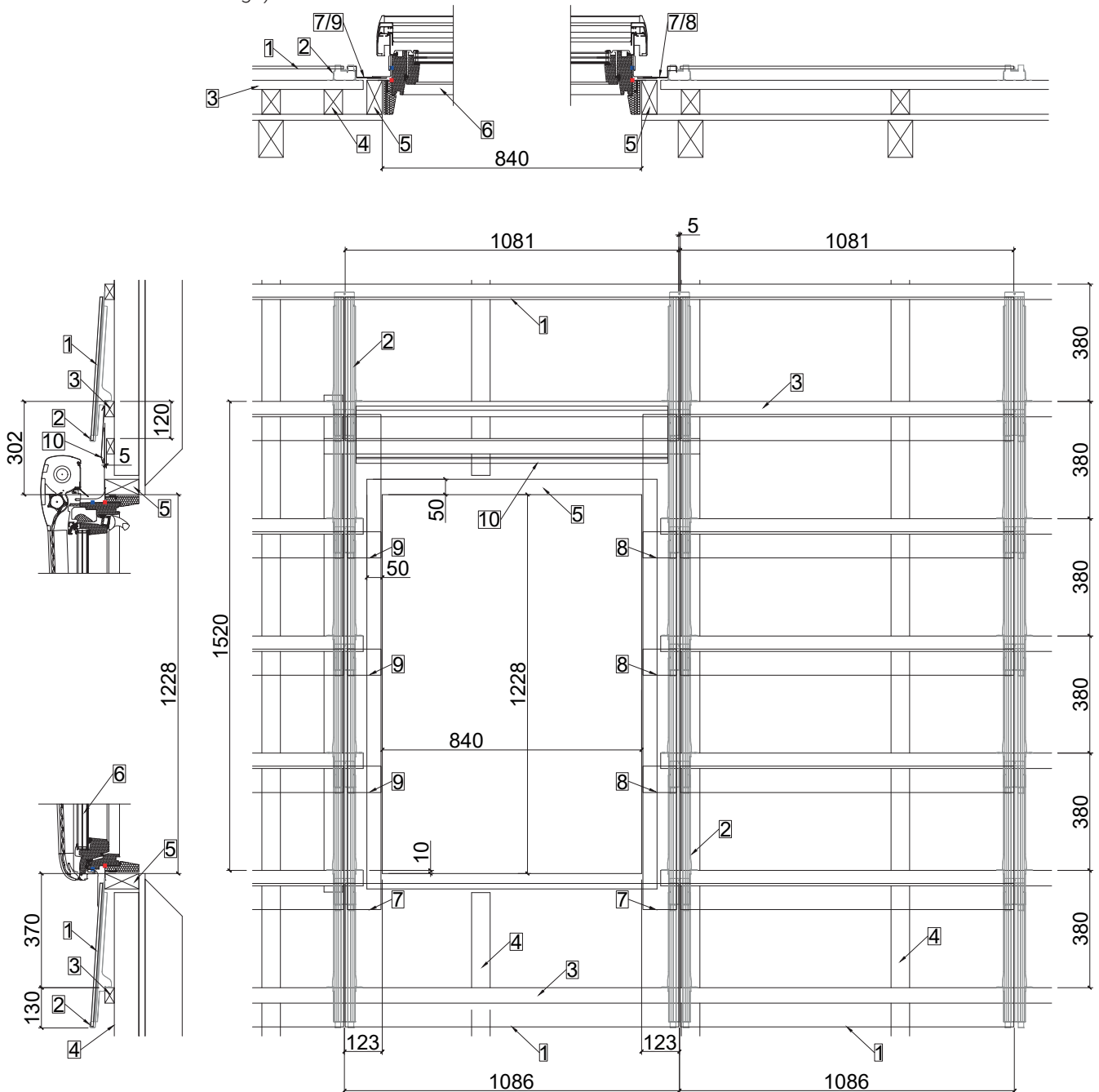


Optionally with external roller shutter or awning.

With roof window VELUX MK06

| A4 | 1:20 | V23.10 |

- |   |  |
|---|--|
| 1 MATCH Slate module<br>(grid dimension 1086mm)   | 6 VELUX roof window MK06                                   |
| 2 MATCH Slate hook z  | 7 Transition plate bottom L & R for<br>MK06-SK06-MK10-SK10 |
| 3 Roof battens  | 8 Transition plate R for MK06-SK06-MK10-SK10               |
| 4 Counterbattens  | 9 Transition plate L for MK06-SK06-MK10-SK10               |
| 5 Subframe for VELUX roof windows<br>(upper side conical / sloping design for<br>better water drainage) | 10 Transition plate top for MK06-SK06-MK10-SK10            |



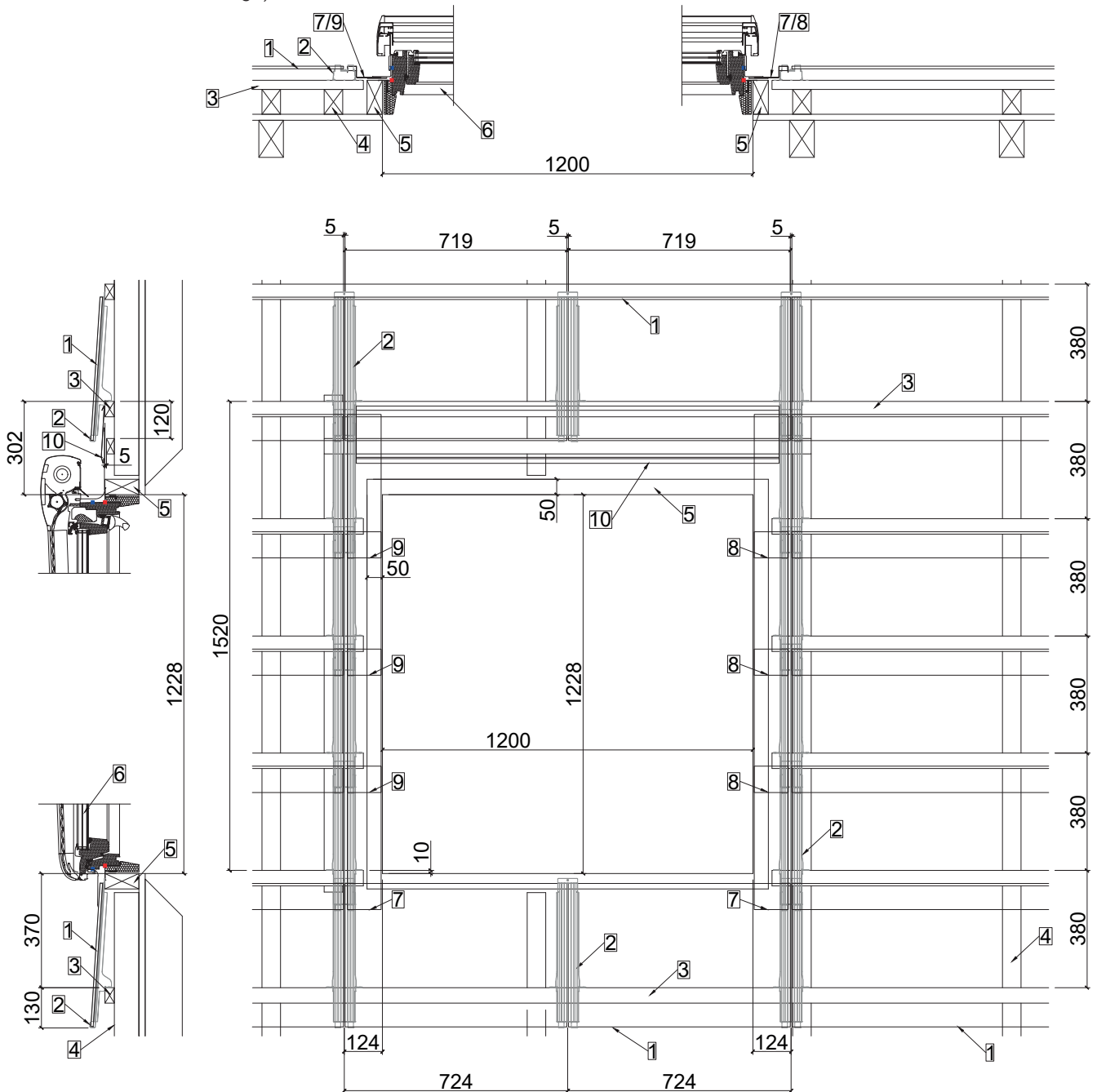
The VELUX installation instructions must also be observed!



## With VELUX SK06 roof window

| A4 | 1:20 | V23.10 |

- |   |   |
|---|---|
| 1 MATCH Slate module<br>(grid dimension 2x724mm)  | 6 VELUX roof window SK06                                |
| 2 MATCH Slate hooks z   | 7 Transition plate bottom L & R for MK06-SK06-MK10-SK10 |
| 3 Roof battens  | 8 Transition plate R for MK06-SK06-MK10-SK10            |
| 4 Counterbattens  | 9 Transition plate L for MK06-SK06-MK10-SK10            |
| 5 Subframe for VELUX roof windows<br>(upper side conical / sloping design for<br>better water drainage) | 10 Transition plate top for MK06-SK06-MK10-SK10         |

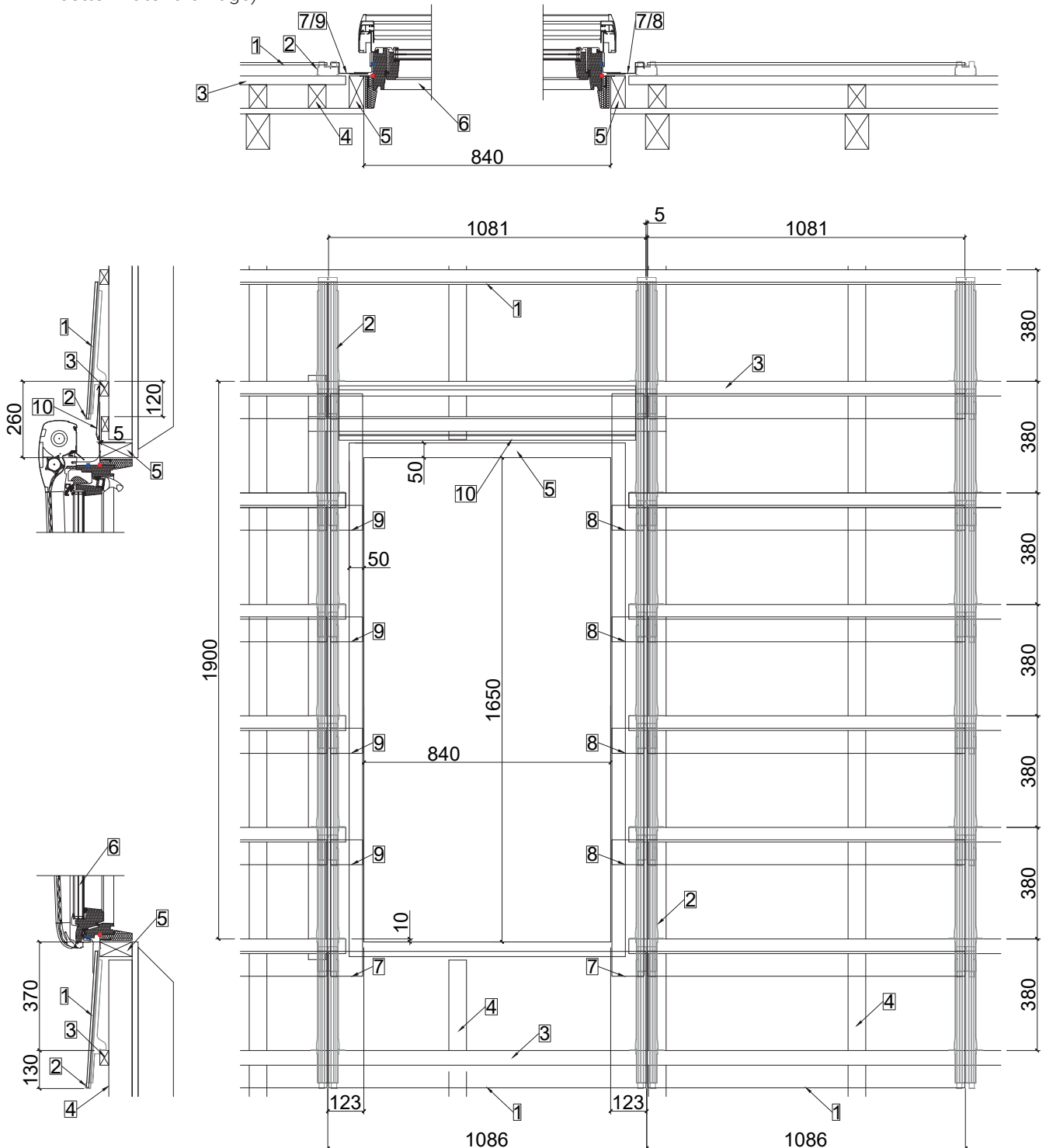


The VELUX installation instructions must also be observed!

With VELUX MK10 roof window

| A4 | 1:20 | V23.10 |

- |   |   |
|---|---|
| 1 MATCH Slate module<br>(grid dimension 1086mm)   | 6 VELUX roof window MK10                                |
| 2 MATCH Slate hook z  | 7 Transition plate bottom L & R for MK06-SK06-MK10-SK10 |
| 3 Roof battens  | 8 Transition plate R for MK06-SK06-MK10-SK10            |
| 4 Counterbattens  | 9 Transition plate L for MK06-SK06-MK10-SK10            |
| 5 Subframe for VELUX roof windows<br>(upper side conical / sloping design for<br>better water drainage) | 10 Transition plate top for MK06-SK06-MK10-SK10         |



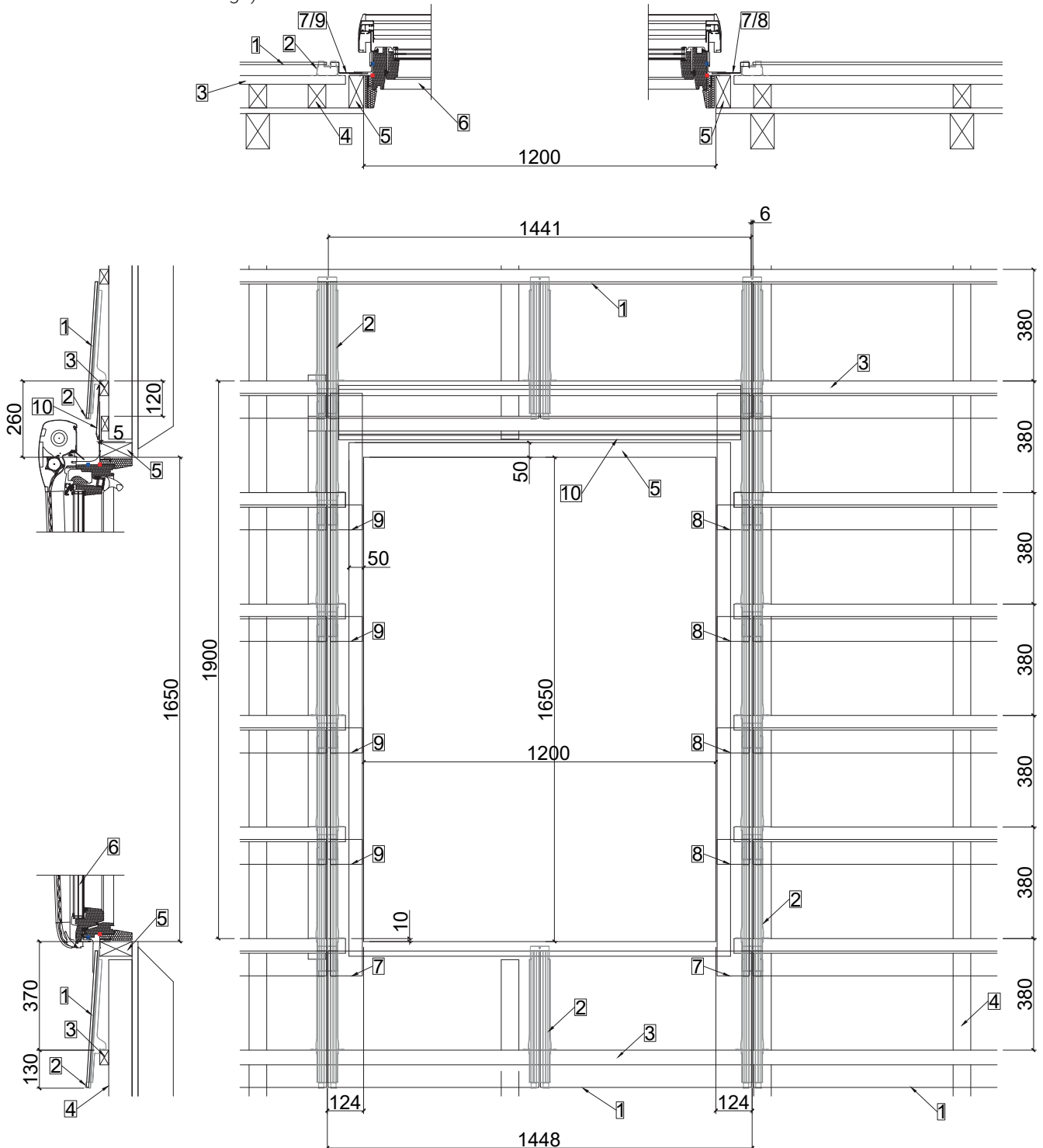
The VELUX installation instructions must also be observed!



With VELUX SK10 roof window

| A4 | 1:20 | V23.10 |

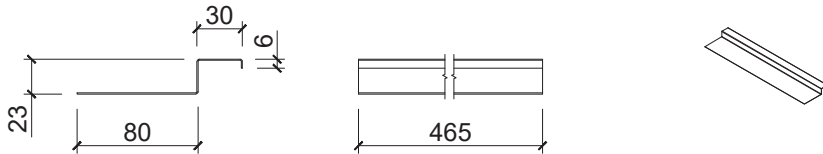
- |   |  |
|---|--|
| <ul style="list-style-type: none"> <li>1 MATCH Slate module<br/>(grid dimension 2x 724mm)</li> <li>2 MATCH Slate hook z</li> <li>3 Roof battens</li> <li>4 Counterbattens</li> <li>5 Subframe for VELUX roof windows<br/>(upper side conical / sloping design for<br/>better water drainage)</li> </ul> | <ul style="list-style-type: none"> <li>6 VELUX roof window MK10</li> <li>7 Transition plate bottom L &amp; R for MK06-SK06-MK10-SK10</li> <li>8 Transition plate R for MK06-SK06-MK10-SK10</li> <li>9 Transition plate L for MK06-SK06-MK10-SK10</li> <li>10 Transition plate top for MK06-SK06-MK10-SK10</li> </ul> |
|---|--|



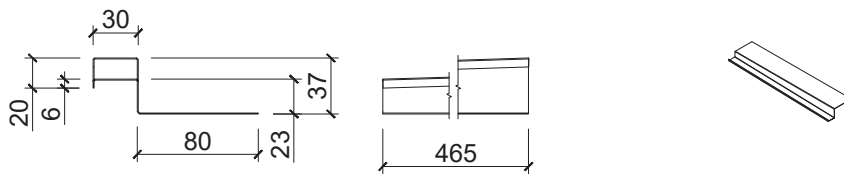
The VELUX installation instructions must also be observed!

### Standardized transition plates

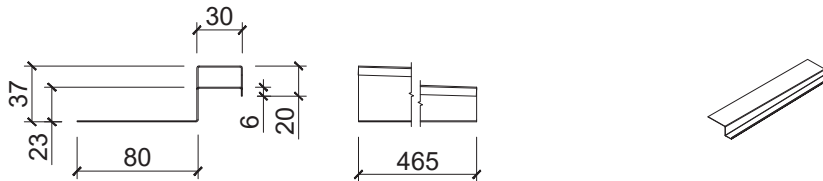
Bottom transition plate L & R for MK06-SK06-MK10-SK10



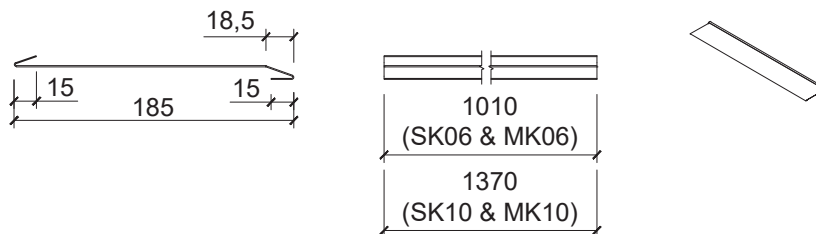
Transition plate R for MK06-SK06-MK10-SK10



Transition plate L for MK06-SK06-MK10-SK10



Transition plate top for MK06-SK06-MK10-SK10



Recommended sheet thickness: 0.7mm

VELUX roof window color: exterior sheet metal in aluminum stove-enamelled umbra grey  
NCS S 7500-N (approximately RAL 7043)

Matching MATCH Slate look: fullblack / totallyblack / granite grey

### Further integration options:

- Standardized transition plate corresponding to wider designs
- Connections similar to MATCH Slate Planning information - Verge with gutter and adhesive fixation
- Execute with blind modules or supplementary panels

### Snow guard above VELUX roof window

To protect the external roller shutter, a MATCH Slate snow guard (MATCH Slate planning information - MATCH Slate UBM 2-hole snow guard) can be fitted above it.